

Data Sheet

# Immersive Resilience Score

Jan 2025

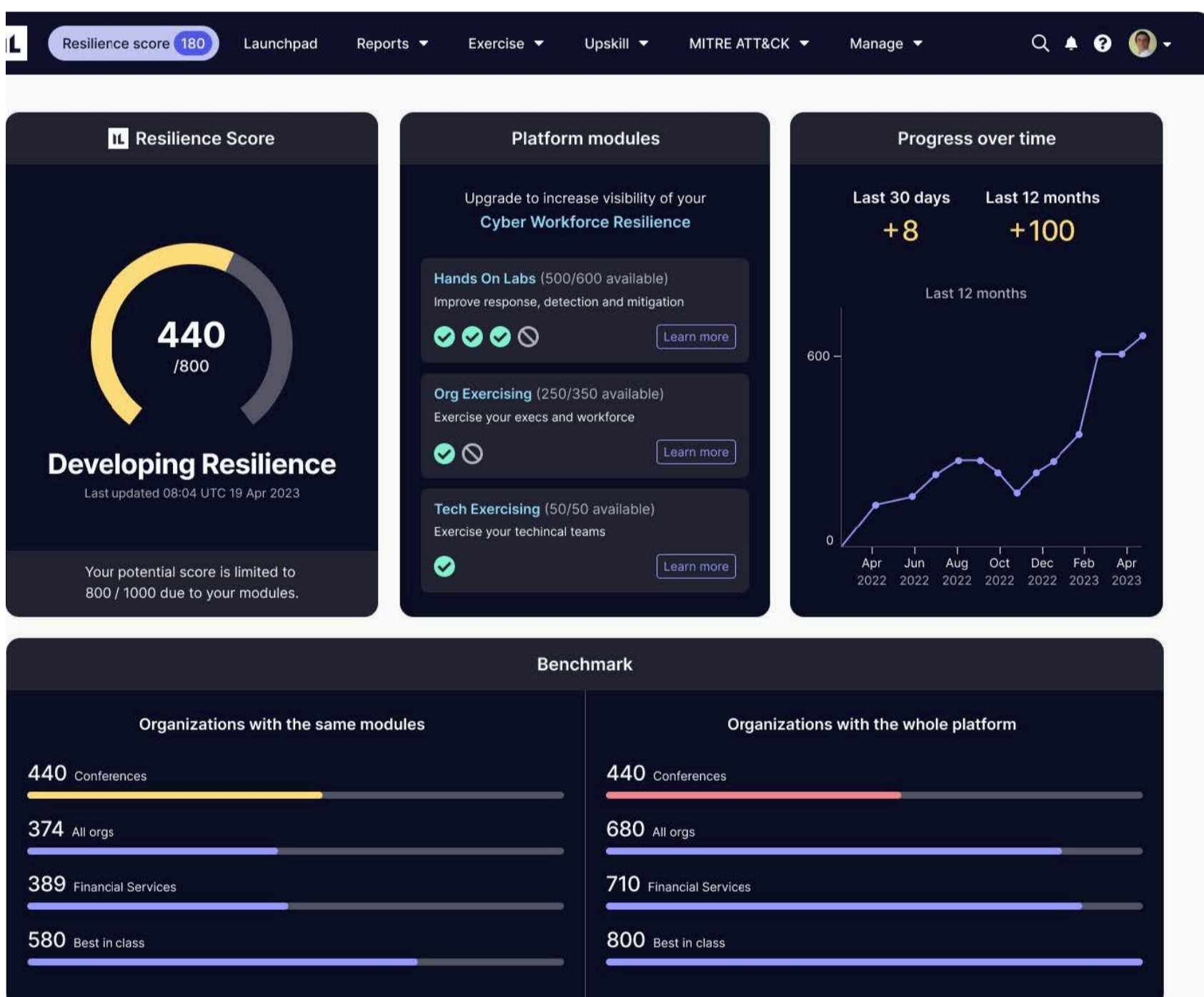
# Resilient



# Measure, Benchmark, and Prove Your Cyber Workforce Resilience

How do you know your organization will be resilient in the face of ever-increasing and more sophisticated cyber attacks?

There is a common belief that people-centric cyber capabilities are not measurable. This may be true for legacy, in-person training, but granular lab and exercise data give us new insights. The Immersive Resilience Score uses advanced statistical techniques to demonstrate that resilience can be assessed, benchmarked, improved, and proven in a clear, data-driven way.






The Resilience Score Dashboard

The Resilience Score is a single value that an organization can use to measure its overall cyber workforce resilience. The algorithm evaluates multiple factors using performance data from across the platform and enables organizations to understand:

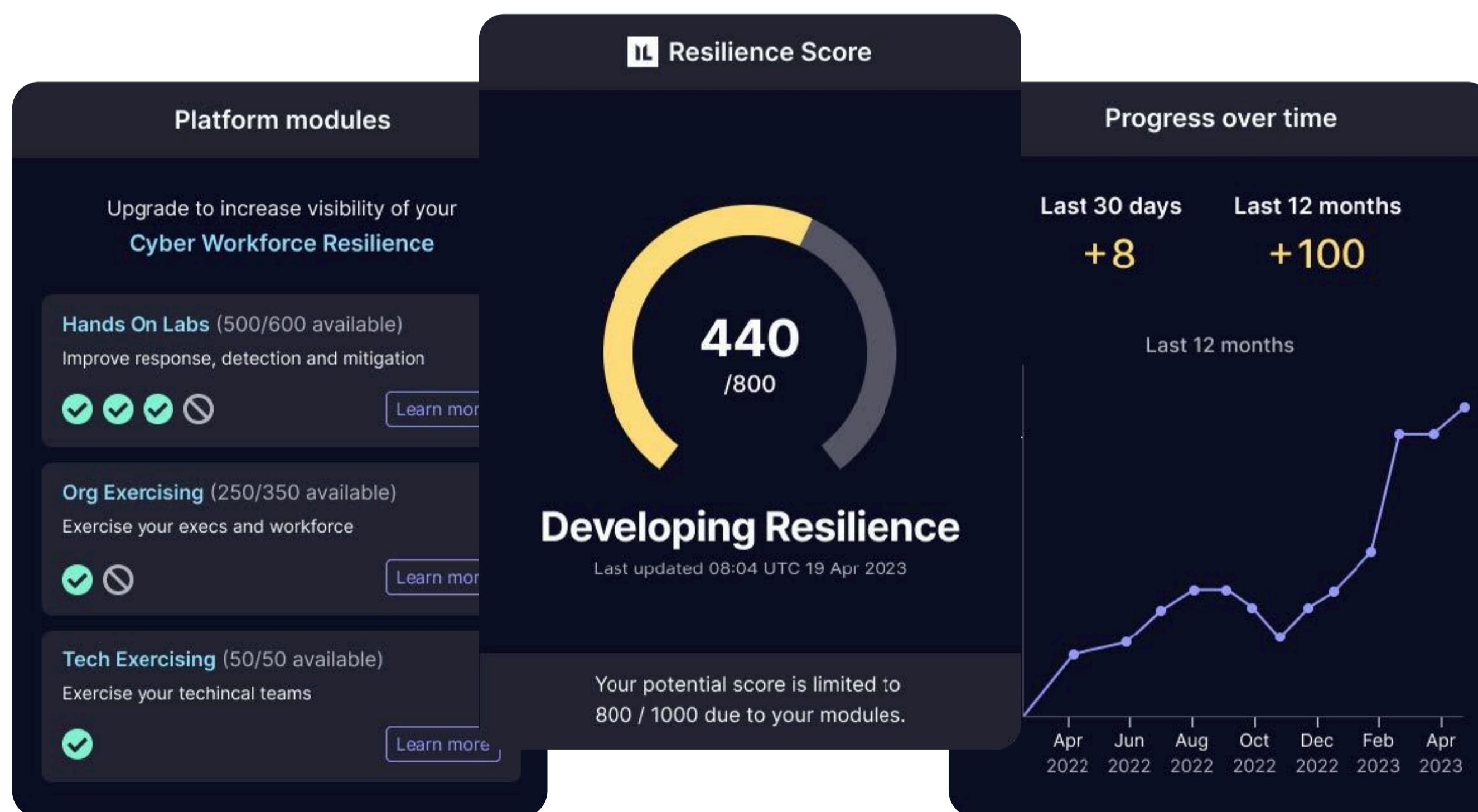
- Their overall cyber resilience
- Trends and progress
- Comparisons to industry and best-in-class benchmarks

With the Resilience Score, Immersive provides not only visibility into an organization's current cybersecurity capabilities, but with actionable recommendations to improve resilience.

Certification & Compliance			Trusted by the World's Largest Organizations			
			<b>400+</b> Customers	<b>&gt;3.5M</b> Total Labs Complete	<b>&gt;100K</b> Unique Users	<b>&gt;2K</b> Hands-on Challenges

## Compliance & Standards

<b>Strengthen Executive Decision Making in Cyber Crises</b>	Ensure that key decision-makers are frequently exercised to enhance their decision-making abilities in real-life crisis situations.
<b>Measure and Strengthen Workforce Cyber Hygiene</b>	Minimize your organization’s vulnerability to attacks by consistently exercising and upskilling your workforce.
<b>Assess Security Team Capability in Realistic Scenarios</b>	Test the effectiveness of your technical teams in realistic, team-based scenarios.
<b>Expand Cyber Framework Coverage</b>	Measure the depth and breadth of your team’s coverage across the MITRE ATT&CK™ framework.
<b>Measure and Improve Secure Coding Practices</b>	Validate your developers’ ability to write secure code by ensuring their awareness of secure coding basics.
<b>Ensure your Security Teams can respond to the latest threats</b>	Maintain up-to-date cyber defense skills by understanding the latest threats and continually upskilling.
<b>Encourage Technical Managers to Drive Upskilling</b>	In a well-protected organization, managers should guide their teams to upskill in relevant areas.
<b>Ensure Cloud Engineers Follow Secure Practices</b>	Assess your cloud engineers’ skills and capabilities to secure your cloud infrastructure.
<b>Verify the Skills of New Talent</b>	Screen cyber candidates during the interview process to verify their claimed skills.



**Platform Modules**  
View platform coverage

**Overall Cyber Resilience**  
Your overall Cyber Workforce Resilience in a single, easy-to-understand score

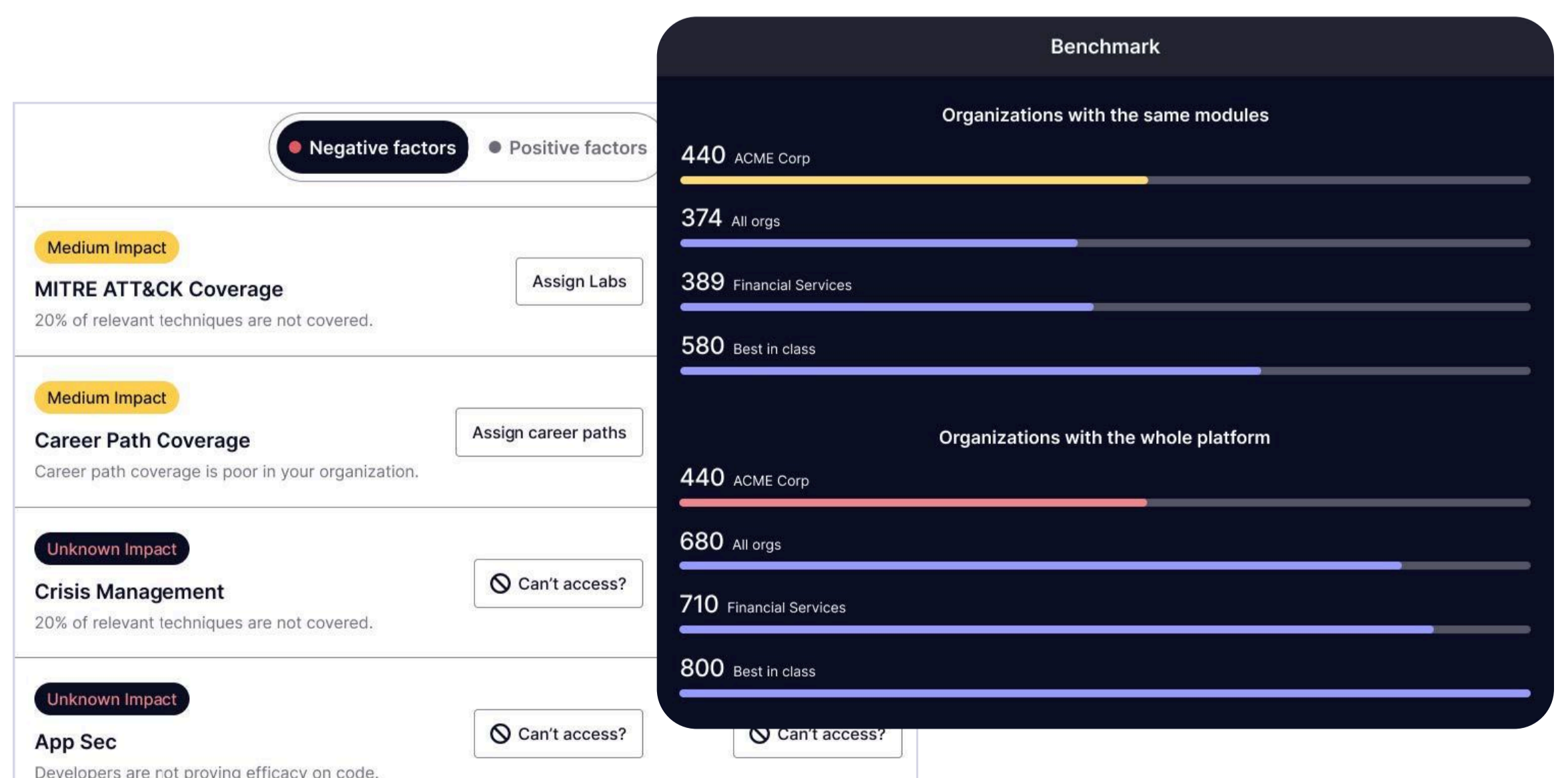
**Progress Over Time**  
Baseline performance and track progress

### Benchmark

Compare your organization to benchmarks and “best-in-class” performers

### Negative / Positive Factors

Understand the factors impacting your organization-wide resilience. Assign action to improve resilience — right from the dashboard!



# Be Ready

Immersive is trusted by the world's largest organizations and governments, including Citi, Pfizer, Humana, HSBC, the UK Ministry of Defence, and the UK National Health Service. We are backed by Goldman Sachs Asset Management, Ten Eleven Ventures, Menlo Ventures, Summit Partners, Insight Partners and Citi Ventures.

